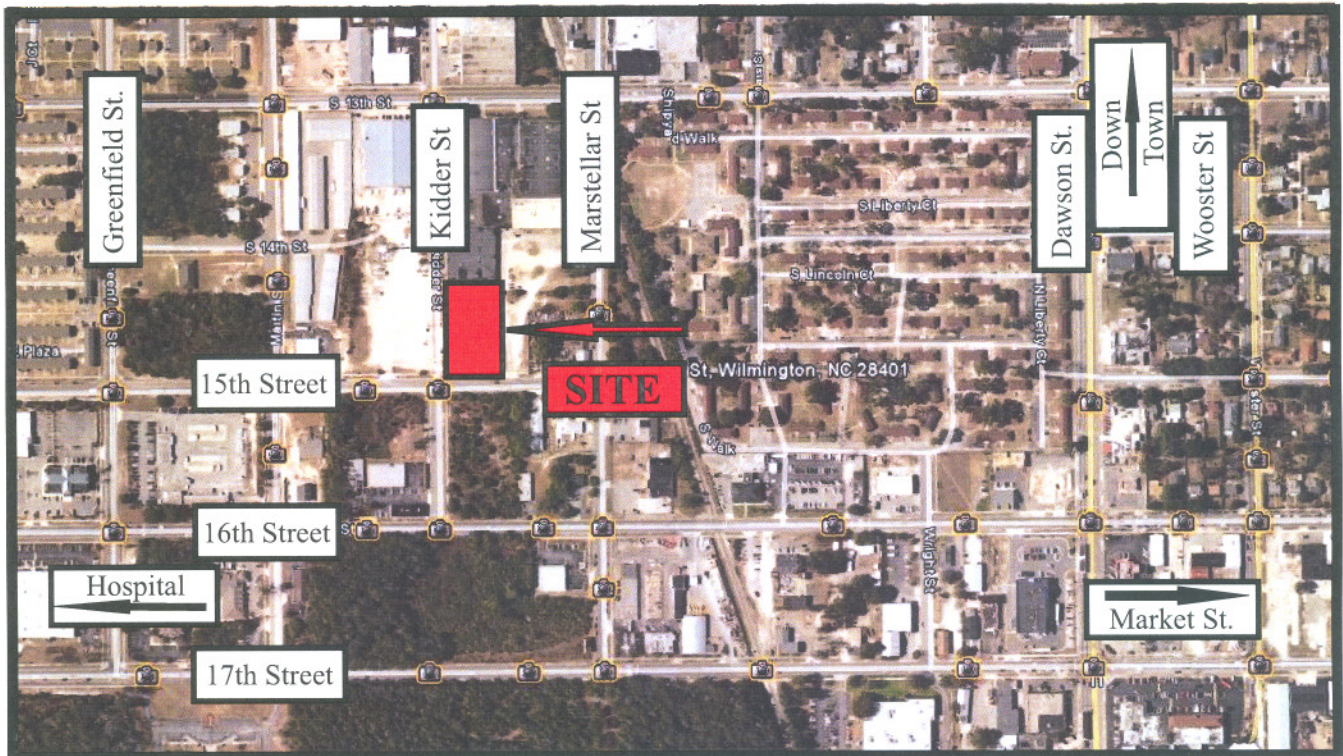




15894 HIGHWAY 17  
P.O. BOX 56  
HAMPSTEAD, NC 28443  
910/270-5100 FAX: 910/270-5110

359 N. FRONT STREET  
P.O. BOX 215  
WILMINGTON, NC 28402  
910/251-2211 FAX: 910/251-2218

# FOR SALE INDUSTRIAL WAREHOUSE



**1220 SOUTH FIFTEENTH STREET  
WILMINGTON, NORTH CAROLINA**

**This industrial warehouse provides versatile space for storage or manufacturing in central Wilmington. Offering 18,600 square feet with sprinklers, drive-in and dock doors, this facility can suit a wide variety of businesses. Currently leased through May of 2012.**

**CALL MIKE NADEAU**

**(910) 620-1237**

**Commercial & Investment Real Estate Specialists**

email: [info@creativecommercial.biz](mailto:info@creativecommercial.biz)

[www.creativecommercial.biz](http://www.creativecommercial.biz)



**1220 South 15th Street**  
**Building 8 - Remington Industrial Condos**



**THE BUILDING**

- 18,600 Square Feet
- 131.7' X 141.75'
- Metal Structure - 1970
- Fully Sprinkled
- Skylights & Vapor Lighting
- 8' x 8' Loading Door
- 14' x 25' Drive-in Overhead Door
- Fully Insulated
- Spans 28' x 65'

**THE CONDOMINIUM**

- The Remington Condominiums include 9 Buildings in the Owner's Association Who Share Use of the Outside Common Area Yards

**THE SITE**

- Zoned "LI" - Light Industrial by City of Wilmington
- Tax Parcel 5414-016-001-008
- Common Area Parking Adjoins Building on Two Sides
- Central Location
- Easy Access to 16th & 17th Street Corridors

**THE LEASE**

- Currently Leased Through May 2012

**THE OFFERING**

**\$595,000**

**CREATIVE COMMERCIAL PROPERTIES, INC.**

15894 Hwy 17  
P.O. Box 56  
Hampstead, NC 28443  
(910) 270-5100  
(910) 270-5110 FAX

CALL  
**MIKE NADEAU**  
(910) 620-1237

email:mike@creativecommercial.biz  
www.creativecommercial.biz

359 N. Front Street  
P.O. Box 215  
Wilmington, NC 28402  
(910) 251-2211  
(910) 251-2218 FAX



Creative Commercial Properties, Inc. reasonably believes the information in this brochure is fairly and accurately stated. However, any prospective purchaser is urged to independently confirm its accuracy and completeness.

