



15894 HIGHWAY 17  
P.O. BOX 56  
HAMPSTEAD, NC 28443  
910/270-5100 FAX: 910/270-5110

359 N. FRONT STREET  
P.O. BOX 215  
WILMINGTON, NC 28402  
910/251-2211 FAX: 910/251-2218

# MEDICAL OFFICE FOR LEASE



**1616 DOCTOR'S CIRCLE  
WILMINGTON NORTH CAROLINA**

**This attractive medical facility offers 2574 square feet in close proximity to New Hanover Hospital. Formerly an orthodontist's office, the efficient floor plan and ample parking make it well suited to a wide variety of medical and professional uses.**

**Jim Quinn  
910-251-2211**



**Commercial & Investment Real Estate Specialists**

email: [info@creativecommercial.biz](mailto:info@creativecommercial.biz)

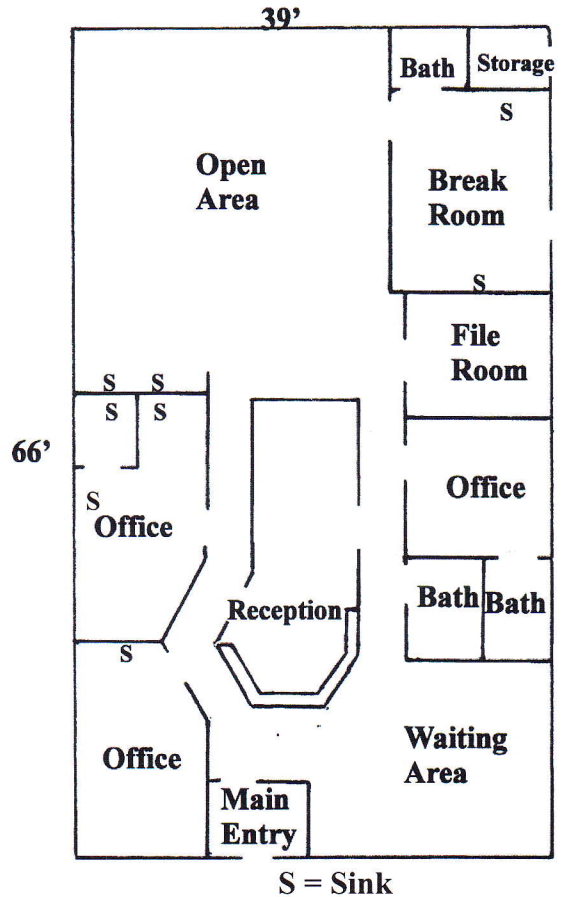
[www.creativecommercial.biz](http://www.creativecommercial.biz)



# 1616 Doctor's Circle

## The Building

- 2574 Total Square Feet (66'x 39')
- Wood Frame Construction with Brick
- No Load Bearing Interior Walls
- Three Washrooms
- Seven Work Sinks
- Custom Shelving, Cabinets & Counters Throughout
- 200 Amp Electric Service
- Security System
- Two Heat Pump HVAC Units
- Full Kitchen/Break Room
- Pull Down Attic Stair way
- Crawlspace Access



## The Lot

- .63 Acre
- 198' Road Frontage
- 21 Parking Spaces With More Possible
- Zoned Office & Institutional (O&I-1) By City
- Within Sight of New Hanover Regional Medical Center
- Tax Parcel R06011-002-004-000

**The Offering**  
**\$2,800/mo**

### CREATIVE COMMERCIAL PROPERTIES, INC.

15894 Hwy 17  
P.O. Box 56  
Hampstead, NC 28443  
(910) 270-5100  
(910) 270-5110 FAX

CALL  
**JIM QUINN**  
(910) 251-2211  
email: [jim@creativecommercial.biz](mailto:jim@creativecommercial.biz)  
[www.creativecommercial.biz](http://www.creativecommercial.biz)

359 N. Front Street  
P.O. Box 215  
Wilmington, NC 28402  
(910) 251-2211  
(910) 251-2218 FAX



Creative Commercial Properties, Inc. reasonably believes the information in this brochure is fairly and accurately stated. However, any prospective purchaser is urged to independently confirm its accuracy and completeness.

