



15894 HIGHWAY 17
P.O. BOX 56
HAMPSTEAD, NC 28443
910/270-5100 FAX: 910/270-5110

359 N. FRONT STREET
P.O. BOX 215
WILMINGTON, NC 28402
910/251-2211 FAX: 910/251-2218

FOR SALE

CONDO OFFICE WAREHOUSE



**2019-B Capital Drive
Wilmington, North Carolina**

Located in the upscale Murrayville Station Industrial Park, this well built 5,000 square foot unit combines quality offices with two warehouse areas, one climate controlled. Part of a three unit condominium, this suite shares ownership of the fully improved 1.5 acre lot. This versatile facility can accommodate many commercial enterprises.

**CALL JIM QUINN
(910) 251-2211**

Commercial & Investment Real Estate Specialists

email: info@creativecommercial.biz
www.creativecommercial.biz



2019-B CAPITAL DRIVE

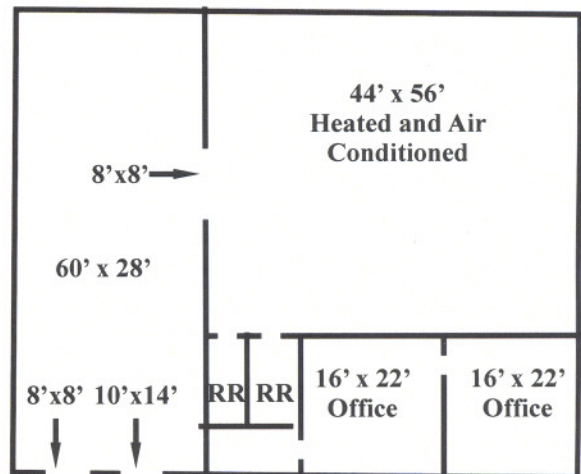
THE BUILDING

- 5,000 Total Square Feet
 - 1,000 sq.ft. Offices With 2 Restrooms
 - 2500 sq.ft. Climate Controlled Warehouse
 - 1500 sq.ft. Additional Storage Warehouse
- Metal Construction - 1998
- 18' Ceiling Height
- 10' x 14' Drive In Overhead Door
- 8' x 8' Dock Level Overhead Door



THE LOCATION

- Part of the Well Planned, Upscale Murrayville Station Industrial Park
- Entrance From Hwy 132N (College Road) With Connection to I-40
- A Condominium Unit With One Third Ownership in the 1.5 Acre Lot With all Landscaping, Drainage and Underground Utilities
- Zoned I-1 Industrial
- Condo Dues \$1200/Year Include Insurance and Lot Maintenance
- Adjacent Condo Pad of 5000 s.f. is Also for Sale for Future Expansion (Unit C).



THE OFFERING

\$450,000

CREATIVE COMMERCIAL PROPERTIES, INC.

15894 Hwy 17
P.O. Box 56
Hampstead, NC 28443
(910) 270-5100
(910) 270-5110 FAX

CALL
JIM QUINN
(910) 520-2807

359 N. Front Street
P.O. Box 215
Wilmington, NC 28402
(910) 251-2211
(910) 251-2218 FAX

email: jim@creativecommercial.biz
www.creativecommercial.biz

Creative Commercial Properties, Inc. reasonably believes the information in this brochure is fairly and accurately stated. However, any prospective purchaser is urged to independently confirm its accuracy and completeness.

